



# Hörmann Garage Door Operators

Convenient and Secure - for You and Your Home

**With patented door  
security kit for  
added security**



## Everything for your safety and security

Hörmann garage doors and operators are approved both individually and as a unit in conformity with the European Standard 13241-1 and are of course tested by the TÜV (German Technical Inspectorate) as well:



- Anti-fall safeguard, operational safety and permanent mechanical functionality
- Finger-trap protection, side trap guards and an electronic force limit
- Electrical safety
- Electromagnetic compatibility

It's worth making a comparison!

**Open the door, close the door – day in day out by hand?  
Time for a Hörmann operator!**

**Just consider how often you have to get out of your car to open and close your garage door by hand.**

**And yet it could all be so much easier!  
You stay seated in the car, press the button on the hand transmitter and drive straight into the garage. Safe and secure and protected from all weathers.**

**And in terms of security, you are always on the safe side - thanks to the automatic latching door security kit.**



### SupraMatic

**The powerful operator with the elegant stainless steel cover and a host of additional functions.**

For garage doors up to 5500 mm wide, including heavy timber doors and those incorporating a wicket door. Suitable for garages with up to 5 parking spaces. Push and pull force: type E= 550 N, type P= 600 N

# Automatically Greater Comfort and Convenience

## Hörmann ProMatic and SupraMatic Garage Door Operators

In choosing a Hörmann door operator, you are opting for state-of-the-art operator technology in a quality that you can absolutely rely on. Even if you don't happen to have a Hörmann quality garage door, a Hörmann operator with all the benefits of boom-guided operator technology is the best choice you can make.



## ProMatic

**The most favourable alternative with the elegant, slate-grey plastic cover.**

For garage doors up to 5000 mm wide and a max. door leaf surface of 10 m<sup>2</sup>. Suitable for garages with 2 parking spaces.  
Push and pull force: 500 N

A 2-button hand transmitter is a standard feature of the ProMatic and SupraMatic operators.



The Hörmann ProMatic and SupraMatic garage door operators can be fitted to all commonly used up-and-over, sectional and hinged garage doors. No matter what the make or whether old or new! **Retrofitting presents no problem.**



Thanks to the “soft” start and “soft” stop, the door opens jolt-free and closes gently in the final phase by gradual braking. This not only saves wear and tear on the door and operator but also ensures that the neighbours get a good night’s sleep! With the SupraMatic the “soft” start and “soft” stop can be separately adjusted.

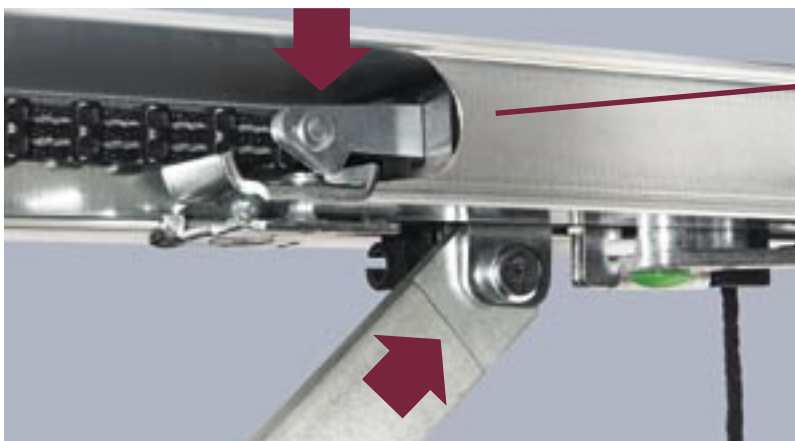


# Reliable, Safe, Maintenance-free

ProMatic and SupraMatic: the Quality Garage Door Operators

Hörmann’s boom-guided operator technology is a patented system that offers you nothing but benefits: smooth-running reliable operation and automatic latching for increased security, so you don’t have to worry about a thing because everything is taken care of for you.

## Full Equipment as Standard for the ProMatic and SupraMatic Operators



**Automatic door latching - a Hörmann patent**

### **Automatic door latching in the operator boom**

When the door closes, the door security kit automatically engages into the boom stop. This provides effective security to prevent the door from being forced open.

This patented door security kit is a mechanical device, so it functions at all times even during a power failure. That's why you can safely pull out the mains plug before going away on holiday.

### **Maintenance-free toothed belt Nothing drips onto your car roof!**

No greasing or oiling necessary. No rattling chain, but instead a super-smooth, super-quiet belt action. A key advantage over chain and spindle drive operators.

### **Fully automatic belt tensioning No retensioning necessary!**

A major benefit over all other makes: Only the Hörmann toothed belt is self-adjusting.

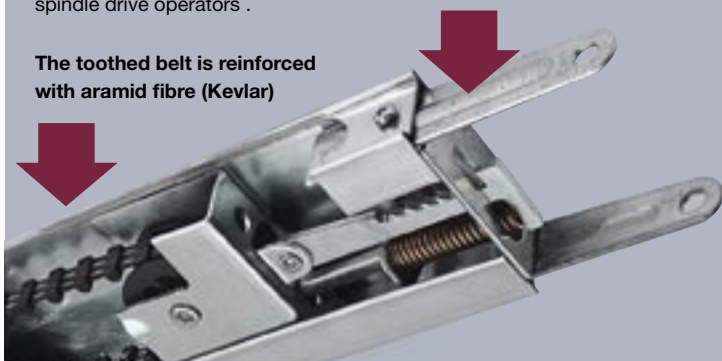
### **An extremely flat boom, ideal for retrofitting**

The extremely flat boom (no higher than 3 cm) means the operators can be fitted to any garage door. The boom is available as a one-piece or a transport-friendly two-piece version.

### **Trouble-free anchoring**

If, for example, a lamp or girders are in the way, the track supports simply slide to one side to accommodate them.

### **The toothed belt is reinforced with aramid fibre (Kevlar)**



**The toothed belt technology - a Hörmann patent**

**The boom - a Hörmann patent**



### **Automatic adjustment It couldn't be easier**

You simply press the "open" (↑) and "close" (↓) buttons once and the electronics automatically tune themselves to your garage door. With the SupraMatic, further functions (page 10) can be quickly and simply set via the 7-segment display.

### **The reliable automatic cut-out**

On encountering an obstruction, the door stops immediately and is automatically raised by approx. 30 cm to clear the obstruction.

The intelligent automatic cut-out is self-testing and, if necessary, also self-readjusting.

If, for instance, you would like to operate the driveway light and entrance lighting by remote control in addition to your entrance gate and garage door, then a 4-button hand transmitter comes in really handy!



## Drive into Your Garage by Remote Control

**because its so much more convenient and offers greater security too**

**You stay in the car and conveniently operate the garage door by remote control, just as you would your TV. You can drive into your garage, protected from all weathers, simply on the press of a button. And late at night the direct route is more secure by far.**





2-button hand transmitter with holder



4-button hand transmitter with holder



2-button mini hand transmitter with key-ring



4-button mini hand transmitter with key-ring



2-button micro hand transmitter with key-ring



4-button backup hand transmitter  
The »general pass key« for the property manager.

### 868.3 MHz radio frequency for a stable range

Currently the best solution among all the approved radio frequencies.

### Hörmann hand transmitters are impact-resistant

A hand transmitter can get dropped at any time. When it does, you need to know that it will carry on working. That's why the aerial is integrated into the unit and the battery contacts are resilient.

### Easy transfer of the code from one hand transmitter to the other

Your personal security code can be easily transferred to other hand transmitters to ensure that all the members of your family gain access to your garage.



### Holder for the car sun visor

No more searching around in your bag or the storage tray. You always know where the hand transmitter (standard size) is and it's always ready to hand. Holder with sun visor clip on request.



### Emergency release from the outside for garages without a second entrance

Choose between these two options:

#### Emergency release lock

with 23 mm ø round cylinder (see also photo at top left). The emergency release lock cannot be mastered with other locks in your home.

#### Emergency release handle

with lock and Bowden cable.

Eight beautifully styled handles to choose from. The emergency release handle can be mastered with other locks in your home.



With a digital coder, you don't need to take either a key or remote control with you. And when it's dark, the illuminated code modulator proves the ideal solution.



## Accessories for Added Comfort and Convenience

We are geared to your requirements

Over and above the radio-controlled hand transmitters, we offer a wide range of high-quality static control elements in an attractive design. To increase the comfort factor.

Your Hörmann specialist dealer will be happy to advise you.



# NEW



## Code modulator with illuminated buttons

Particularly convenient in the dark. Code modulators are wireless. So you don't have to lay any cables! A code modulator allows you to actuate up to ten automated doors.



## Digital coder

You simply enter your own personal combination code. With the deluxe version you can open/close a second door or gate as well as switch on the outdoor lighting.



## Transponder key switch

You simply hold the coded transponder key approx. 2 cm in front of the reader. Two keys are included, further keys are available on request.



## Key switch

As a flush or surface-mounted version, each with three keys.



## Internal push-button units

Installed inside the garage or in the hall within sight of the garage door. LEDs indicate whether the door is open or closed. In the deluxe 4-function version, the operator lighting can be switched on and off or, for instance when you are away on holiday, switched off permanently.

## IT1 push-button unit for the ProMatic operator

## IT2 push-button unit for the SupraMatic operator

## IT4 push-button unit for the SupraMatic operator



## Flush-mounted radio transmitter

For all standard 55 mm diameter switch boxes. Ideally, centrally installed in the hall or living room within sight of the garage door. With the two functions offered, you can operate not only your garage door but in addition, for example, the outdoor lighting, pond pump, garden seating or the Christmas tree lights on the patio.



## Receiver unit

If you switch on additional outdoor lighting and want, for example, to open a garage door (other make) with the hand transmitter, you require a relay receiver with 1, 2 or 4 channels.



Where two doors are positioned adjacent to each other, one key switch is sufficient.

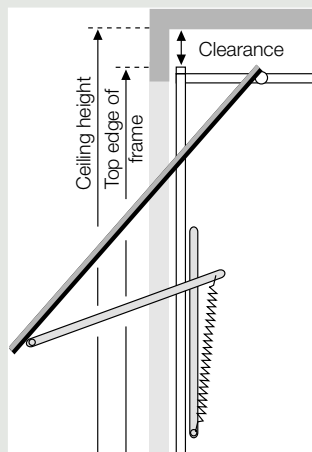
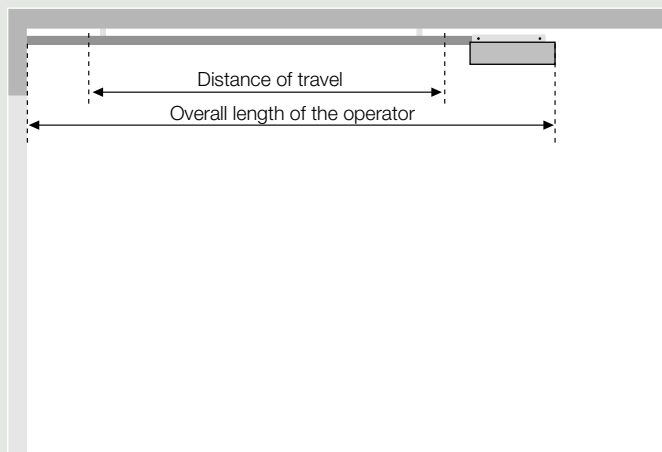


## Photocell

Vehicles and persons are detected immediately. This rules out collisions and provides a level of safety that particularly families with children appreciate.

# Installation Details and Technical Specifications

## for the ProMatic and SupraMatic Operators



### Clearance for up-and-over doors

| Type                                       | Clearance |
|--|-----------|
| N80  | 0 mm      |
| N80, design 905, 941 or with timber infill | 15 mm     |
| DF98, 95, 80                               | 65 mm     |

### Clearance for sectional doors with tracks N

| Ceiling height           | Clearance |
|--------------------------|-----------|
| Ordering height + 210 mm | 0 mm      |

### Sectional doors with tracks H

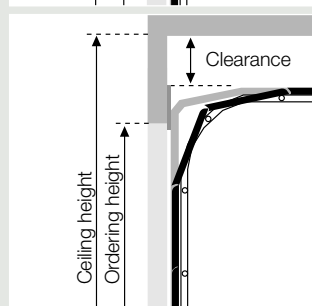
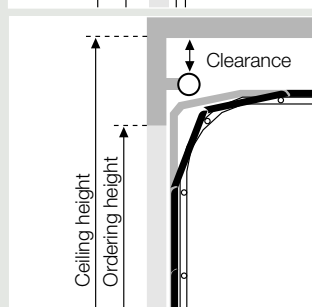
0 mm

### Clearance for sectional doors with tracks Z, L

| Ceiling height           | Clearance |
|--------------------------|-----------|
| Ordering height + 115 mm | 15 mm     |

### Clearance for other door makes

30 mm are required between the door's highest point of travel and the ceiling.



All dimensions are minimum dimensions.

| Boom type            | Overall length | Distance of travel |
|----------------------|----------------|--------------------|
| <b>K</b> Short boom  | 3100 mm        | 2350 mm            |
| <b>M</b> Medium boom | 3350 mm        | 2600 mm            |
| <b>L</b> Long boom   | 4100 mm        | 3350 mm            |

Booms K, M and L for use with Hörmann garage doors

|          |                                     |                    |
|----------|-------------------------------------|--------------------|
| <b>K</b> | Up-and-over doors (N80 and DF98)    | up to 2375 mm high |
|          | Sectional doors with tracks N       | up to 2125 mm high |
|          | Sectional doors with tracks Z, L    | up to 2000 mm high |
| <b>M</b> | Up-and-over doors (N80 and DF98)    | up to 2625 mm high |
|          | Sectional doors with tracks N       | up to 2375 mm high |
|          | Sectional doors with tracks Z, L, H | up to 2250 mm high |
| <b>L</b> | Up-and-over doors (N80 and DF98)    | up to 2750 mm high |
|          | Sectional doors with tracks N, L, H | up to 3000 mm high |

For all other door makes note the distance of travel!

### Nominal power

|              |       |
|--------------|-------|
| ProMatic     | 150 N |
| SupraMatic E | 165 N |
| SupraMatic P | 180 N |

### Pull and push force

|              |       |
|--------------|-------|
| ProMatic     | 500 N |
| SupraMatic E | 550 N |
| SupraMatic P | 600 N |

### Short-term peak load

|              |        |
|--------------|--------|
| ProMatic     | 650 N  |
| SupraMatic E | 700 N  |
| SupraMatic P | 1000 N |

### Remote control

With HS2 2-button hand transmitter (868.3 MHz) and separate receiver unit. Fail-safe radio system with security coding from more than 1 billion options. On the press of a button, simple transfer of the hand transmitter code via "teaching" function.

### Special functions of the ProMatic

Easy to adjust thanks to 3 DIP switches on the control PCB.

- Operator lighting 3 min. light
- Easy-to-activate automatic timer with 30 sec. open phase and 2 sec. early warning phase
- Photocell or closing edge safety device can be connected
- Option relay for warning light,

additional operator lighting or feedback from door's end-of-travel positions: 500 W/250 V/AC.

### Special functions of the SupraMatic

Easy to adjust thanks to 3 buttons and a 7-segment display.

- 3-min. operator lighting can be individually selected from 1-5 minutes or be switched off permanently.
- External lights can be switched on and off via the operator.
- Contact load: 500 W/250 V/AC
- Automatic timer, open phase easy to activate and adjust (photocell and/or closing edge safety device required)
- Photocell and closing edge safety device can be set with or without self-monitoring
- Relay option for a warning light
- Belt relief is adjustable
- Indication of end-of-travel positions via an optional relay
- Factory reset
- Adjustable force limit
- Adjustable "soft" stop

### Door travel speed

|            |         |
|------------|---------|
| ProMatic   | 13 cm/s |
| SupraMatic | 14 cm/s |

### Automatic cut-out

Automatically learned separately for both directions.

### End-of-travel cut-out/force limit

Self-learning, free from wear because works without mechanical switches, additionally with integral excess travel stop. The automatic cut-out is self-readjusting after every door cycle.

### Motor

DC motor with Hall sensor. On the ProMatic operator with adjustable "soft" stop for up-and-over and sectional doors. On the SupraMatic operator with electronically controlled "soft" start and "soft" stop. Both operators with self-locking worm gears and transformer with thermal overload protection. Operating mode: S2. Shot-time duty: KB 2 min.

### Mains connection

230/240 V/AC, 50/60 Hz. Stand-by approx. 4.5 W. ProMatic with European plug. SupraMatic with earthing-contact plug.

### Screwless connecting technique

For external devices with safe low voltage 24 V/DC for interior and exterior buttons with impulse operation, digital coder, closing edge safety device or photocell with floating output as well as option relay. With the SupraMatic operator, direction selector also possible.

### Universal fitting

For up-and-over and sectional doors.

### Boom

Extremely flat, just 30 mm high, with integral door security kit and maintenance-free, patented toothed belt. Transport lengths (mm): 1-part: 3100 (K), 3350 (M), 4100 (L). 2-part: 1550 (K), 1680 (M), 2050 (L).

### Dimensions of operator head

160 x 120 x 340 mm (W x H x D)

### Dimensions of cardboard box

195 x 145 x 600 mm (W x H x D)

### Shipping weight

|               |            |
|---------------|------------|
| Operator head | 6.4 kg     |
| Booms         | 6.8 kg (K) |
|               | 7.4 kg (M) |
|               | 8.8 kg (L) |

### Protection category

For dry rooms only

### Parking spaces

ProMatic 2 parking spaces up to a max. door leaf area of 10 m<sup>2</sup>. SupraMatic E 2 parking spaces up to a door width of 5000 mm. SupraMatic P 2-5 parking spaces up to a door width of 5500 mm.

### Field of application

Exclusively for garages in the domestic sector

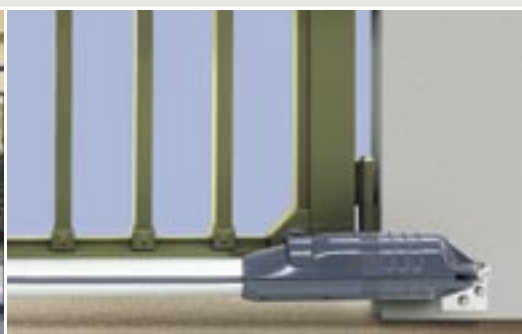
# Hörmann Operators for Entrance Gates

Increased Comfort and Convenience for Hinged and Sliding Gates

No entrance gate is really convenient and secure, unless it has been equipped with a remote-controlled operator. So, don't be satisfied with less! It goes without saying that not just any old operator will do! It needs to be a quality product that you can rely on day in and day out. In choosing a radio remote-controlled, high-performance operator from Hörmann, you are definitely making the right decision because it comes with decades of know-how built in: for your new hinged or sliding gate or for retrofitting to an already existing entrance gate.



It includes a 2-button hand transmitter as a standard feature



**DTA Hinged Gate Operator**  
For doors up to 4000 mm wide and 2000 mm high. Push and pull force 1200 N.

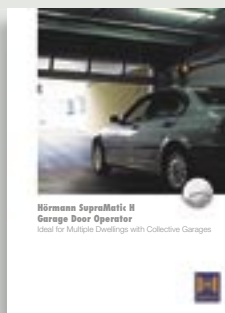
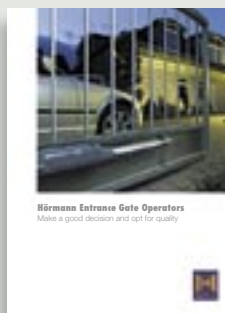


**STA Sliding Gate Operator**  
For doors up to 6000 mm wide and 2000 mm high. Push and pull force 1200 N.

## Hörmann SupraMatic H Operator

The powerful operator for collective garages with up to 20 parking spaces

This operator with deluxe accessories for individual solutions is specifically geared to withstand the rigours of frequent opening and closing as occurs in underground and collective garages with up-and-over or sectional doors. Push and pull force 1000 N.



Further information in the Hörmann specialist brochures and at [www.hoermann.com](http://www.hoermann.com)





Hörmann KG Amshausen



Hörmann KG Antriebstechnik



Hörmann KG Brandis



Hörmann KG Brockhagen



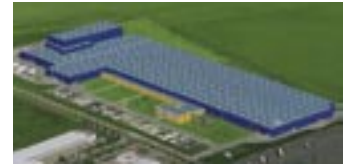
Hörmann KG Dissen



Hörmann KG Eckelhausen



Hörmann KG Freisen



Hörmann KG Ichttershausen



Hörmann KG Werne



Hörmann Genk NV, Belgien



Hörmann Beijing, China



Hörmann Inc. Vonore TN, USA

(Issue 05.04) 85 188 E/P  
Print 08.04

# Hörmann: Quality without compromise

Hörmann is the only manufacturer worldwide that offers you a complete range of all major building products from one source. We are manufacturing in highly-specialized factories using the latest production technologies.

The close-knit network of sales- and service companies throughout Europe, and the activities in the USA and China make Hörmann your strong partner for first-class building products, offering "Quality without compromise".

## Doors

- | Up-and-over garage doors | Sectional garage doors
- | Sectional industrial doors | Rolling shutters | Rolling grilles
- | Folding doors | Doors for fire stations | High speed doors
- | Sliding doors | Steel sliding gates | Sportshall doors
- | Double-swing doors | Strip curtains

## Hinged Doors

- | Fire resistant and smoke-tight doors
- | Multipurpose doors | Security doors
- | Acoustic doors | Internal doors | Entrance doors in aluminium
- | Canopies for entrance doors | Windows in aluminium

## Door Frames

- | Door frames in galvanised steel | Special door frames in steel
- | Door frames in stainless steel

## Operators

- | Garage door operators | Entrance gate operators
- | Operators for industrial doors

## Loading Technology

- | Dock levellers | Dock seals | Loading houses

[www.hoermann.com](http://www.hoermann.com)